



**CO - OPERATION AND
CONFLICT BETWEEN
FIRMS, COMMUNITIES,
NEW SOCIAL MOVEMENTS AND
THE ROLE OF GOVERNMENT IN
REVITALIZING A MINING TOWN
IN MEXICO**

José G. Vargas-Hernández, M.B.A., Ph.D.

An aerial photograph of a town with a mountain in the background. The town is built on a hillside, and the mountain is visible in the distance under a blue sky with some clouds. The text is overlaid on the left side of the image.

The aim is to analyze
relationships of cooperation and
conflict between a mining company
and the involved communities,
New Social Movements and
the three levels of government



**in revitalizing
a mining town
in San Luis Potosí,
México.**




Mexico



Cerro San Pedro



This case also shows the lack of negotiation between firms, communities and new social movements



**and governments in
planning,
development and
revitalization**



of a shrinking
colonial town.

Año	Población	Tasa de Crecimiento
1950	3,032	
1960	2,105	-3.61
1970	1,975	-.64
1980	1,938	-.19
1990	2,274	1.59
1995	3,086	6.05
2000	3,404	1.98

Población total y tasa de crecimiento intercensal

fuente: [CONAPO](#), La población de los municipios de México 1950-1990, 1994.
[INEGI](#), Sistema Nacional de Información Municipal, México, 2002.

The inhabitants of these communities



5/3/2006

Josè G. Vargas-Hernàndez,
M.B.A.:Ph.D.

9



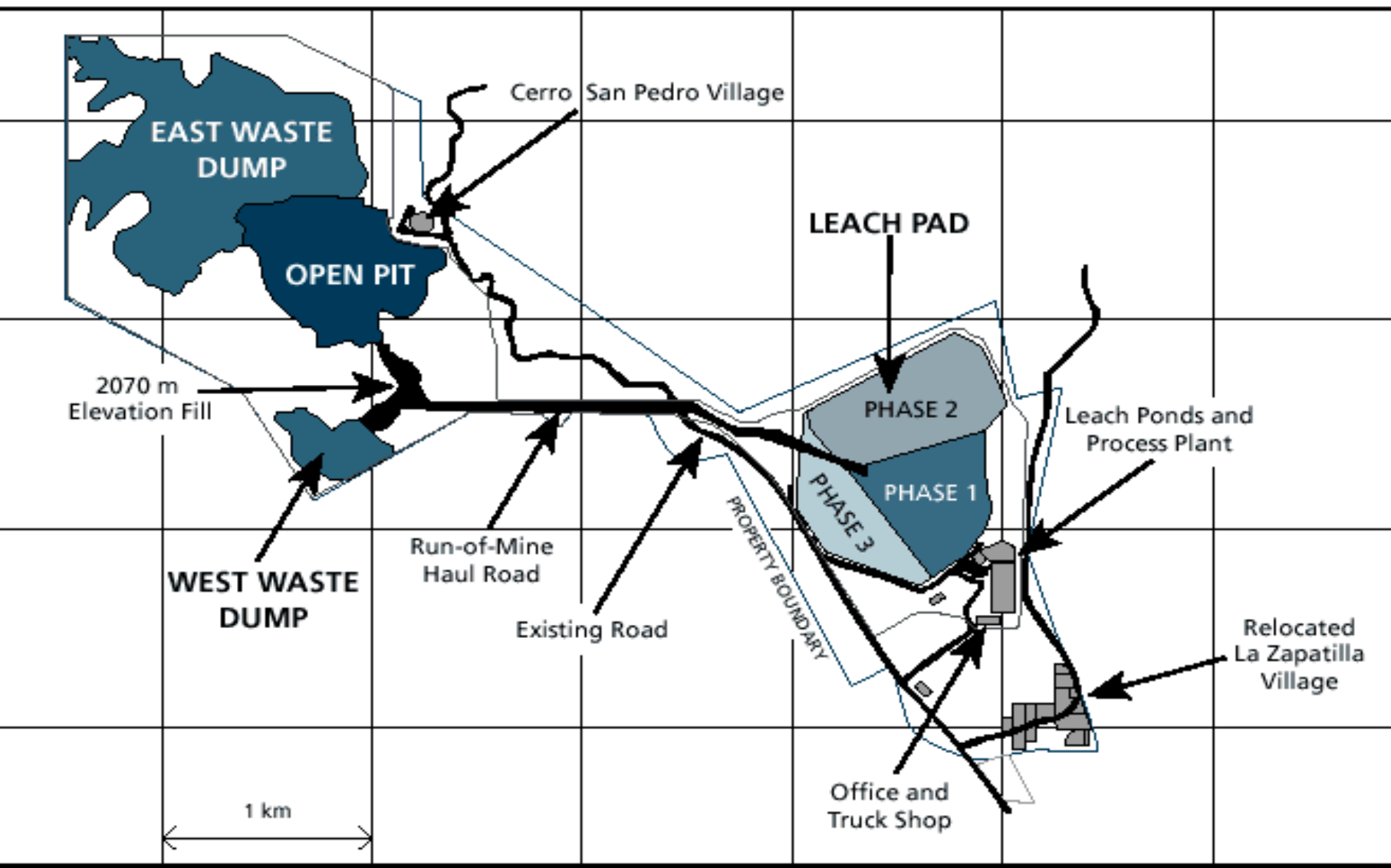
Supported by environmental groups and NGO's

argue with the project.




Josè G. Vargas-Hernàndez,
M.B.A.:Ph.D.

Cerro San Pedro project
Proposed site plan



**will pollute sources
of fresh water**



**besides of perturbing
the environment and
the ecology of the region**

has caused a severe social conflict





**among the inhabitants of San Pedro,
Soledad y San Luis
and has called the attention of all who are
concerned for historic heritage,**

cultural



and environmental issues



2. THE APPROACH



Natural Resources and Conflict: The Scarcity Thesis

- **Environmental degradation/depletion and violent conflict**
 - **Almost exclusive focus on developing countries**
 - **Focus on renewable resources and VIOLENT conflict**
 - **Lots of “small c” conflict: not well-integrated into analysis**

Environmental Pathways Along the Conflict Continuum

- 1. Environment as conflict prevention**
- 2. Environment as lifeline in times of conflict**
- 3. Environment as essential ingredient to peace agreement**
- 4. Environment as post-conflict trust builder**

Exploring Environmental Pathways to Peace Along a Conflict Continuum



**CONFLICT
PREVENTION**

CONFLICT

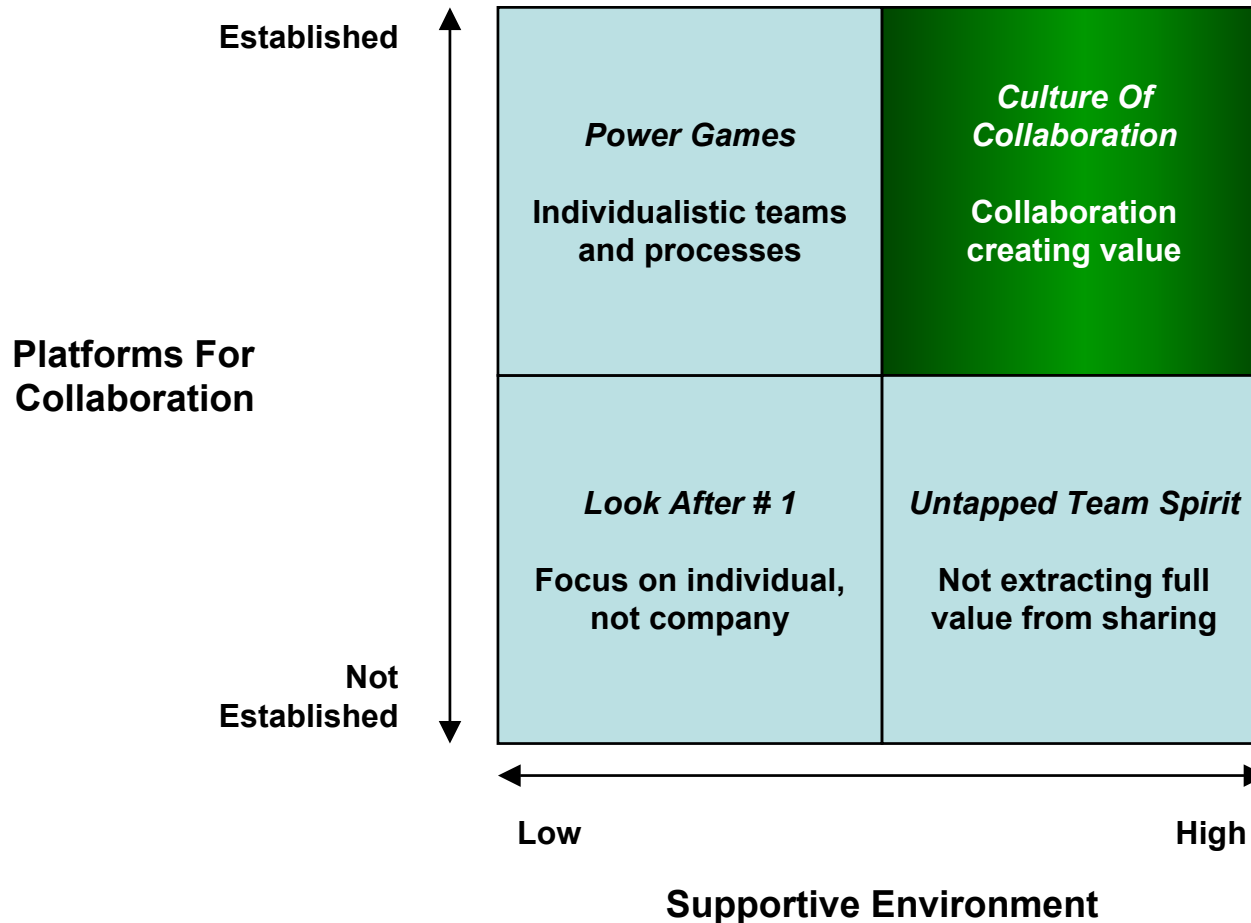
**POST-
CONFLICT**

Cooperation & Conflict

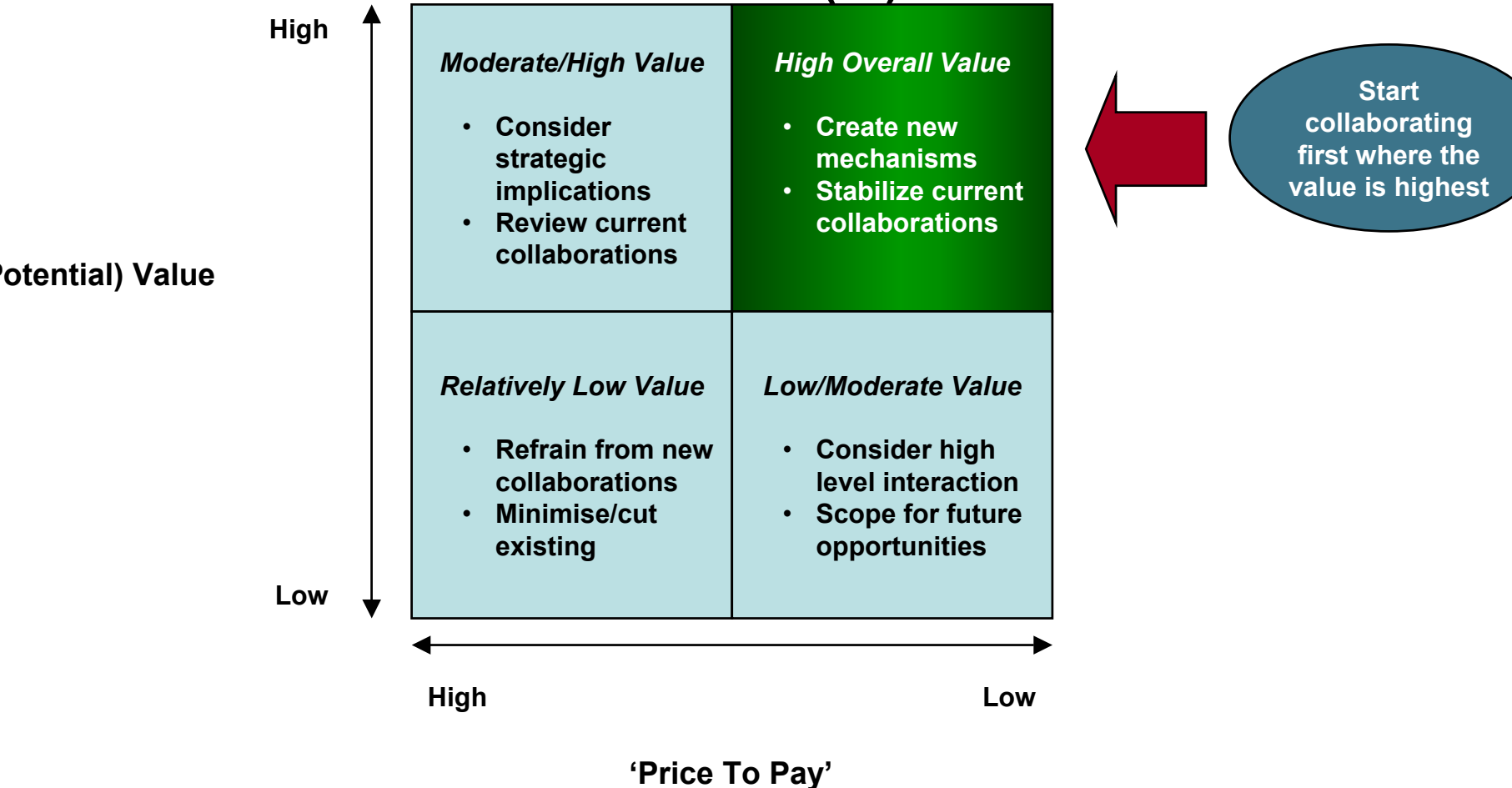
A photograph of a village square. In the background, there is a tall, stone building with a tower, possibly a church or a historical structure. The square is paved and has several trees, including a large, dark tree on the left and a tall, thin tree in the center. The sky is clear and blue. The overall scene is bright and sunny.

With conflict comes collaboration!

ORGANIZATIONS NEED BOTH PLATFORMS FOR COLLABORATION AND A SUPPORTIVE ENVIRONMENT



DETERMINE WHERE COLLABORATION CREATES OVERALL VALUE (II)





EL MUNDO DE SAN PEDRO DE

SOCIAL

JUNIO 18 12:00HR
A UN COSTADO DEL TIEMPO
CULTURA Y LUGAR DE ORIGEN. HISTORIA



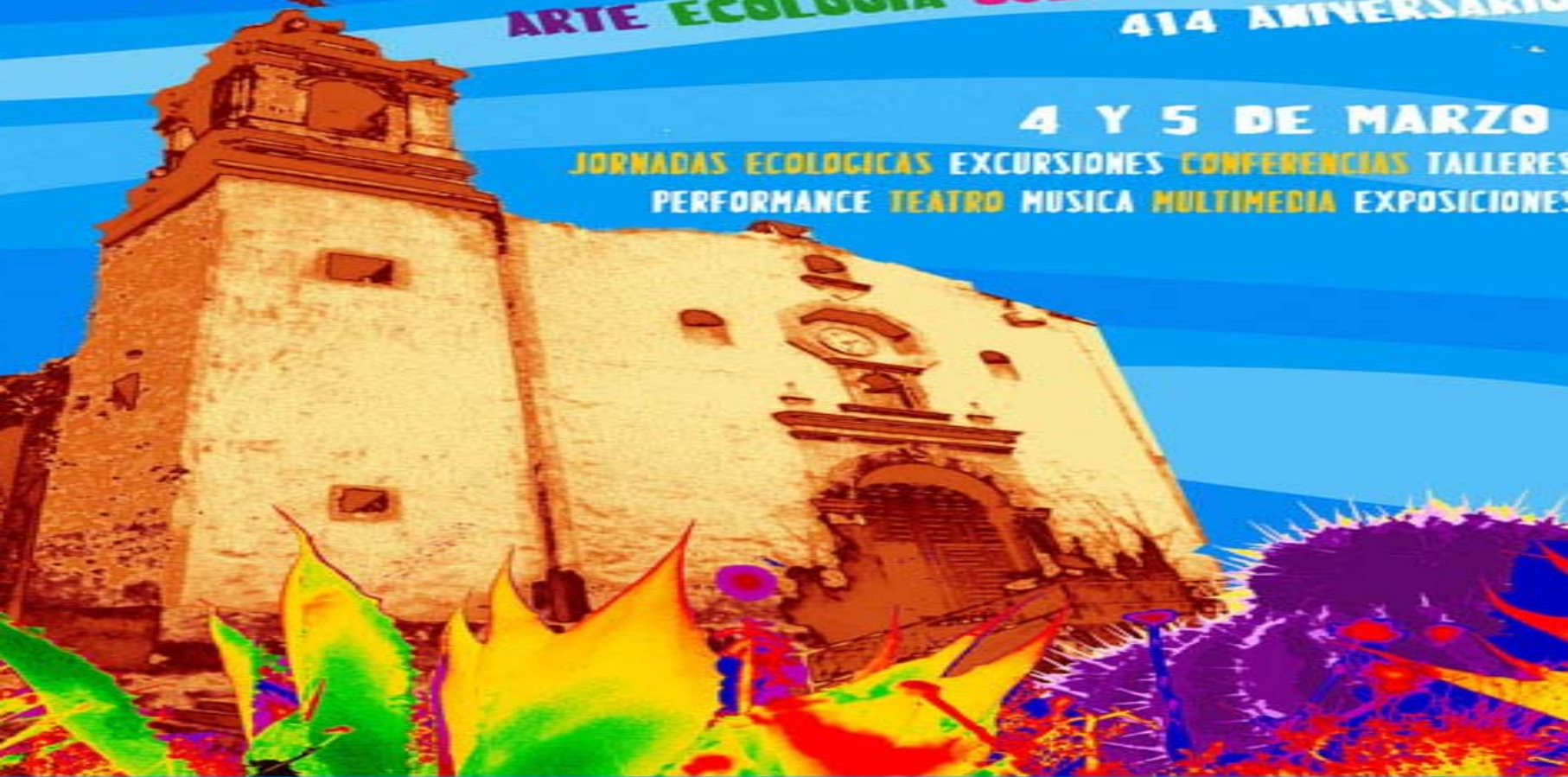
FESTIVAL CULTURAL

CERRO DE SAN PEDRO 2006

ARTE ECOLOGIA CULTURA E HISTORIA
414 ANIVERSARIO

4 Y 5 DE MARZO

JORNADAS ECOLOGICAS EXCURSIONES CONFERENCIAS TALLERES
PERFORMANCE TEATRO MUSICA MULTIMEDIA EXPOSICIONES



Kinds of cooperation

Benefit to self

Cost to self

Benefit to other

Mutualism

Altruism

Cost to other

Competition

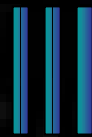
Spite

A Cooperation Continuum

Isolation



Cooperation Continuum



Integration

Unilateral
Action

A Cooperation Continuum

- Communication and notification

- Information sharing

- Regional assessments

- Identify, negotiate & implement sets of national investments that capture cooperative gains

- Adapt national plans to mitigate regional costs

- Adapt national plans to capture regional gains

- Joint project assessment and design

- Joint ownership

- Joint institutions

- Joint investment



Isolation
| | |

Cooperation Continuum

| | | Integration

Unilateral Action

Coordination

Collaboration

Joint Action

3. LESSONS TO BE LEARNED

Information about externalities and future costs of company activities is crucial.



**but more crucial is formulation and
implementation of more sensitive
policies**

**to avoid damage of the
environment,**





biodiversity



and health of population

An aerial photograph of a densely populated hillside. The terrain is steep and covered with numerous small, closely packed buildings. In the foreground, a prominent yellow building with a curved roof is visible. The overall scene suggests a high-density urban or suburban environment built on a hillside.

Governmental institutions must be aware that their decisions may affect the community quality of life



of actual

and future generations

A photograph of a dirt road in a rural, hilly area. The road is unpaved and appears to be made of packed earth or sand. On the right side of the road, there is a low stone wall or curb. In the background, there are several stone buildings, some of which appear to be in ruins or under construction. There are also some trees and bushes scattered around the buildings. The sky is overcast.

**only for a small increment
in economic growth**



**and large increase in private benefits of
a small group of investors.**

**More informed
citizens
tend to be
more active
protestors,
such as the
case of the
students in
San Luis.**



FUERA
MSX
VIVA SAN
PEDRO



Contact between informed individuals of diverse groups and organizations help to exchange experiences and create public opinion in favor of mobilizations.

An aerial photograph of a village built on a hillside. A prominent church with a tall, brick tower and a domed roof is visible on the left. To the right, a stone tower stands on a rocky outcrop. The surrounding area is a mix of green vegetation and brown earth.

Community participation and involvement in decision making of community development planning is quite limited by the lack of critical information.

- This fact is critical when the local government can not provide the right information because there are other interests affecting the process.

