

# **Demographic Change, Segregation and Social Urban Renewal from a North Rhine-Westphalian perspective**

Presentation at the  
International Symposium  
„Coping with City Shrinkage and Demographic Change –  
Lessons from around the globe“

**Evelyn Sucato**

Research Institute for Regional and Urban Development, Building and Construction  
of the Federal State of North Rhine-Westphalia (ILS NRW)  
Department for Urban Development and Housing

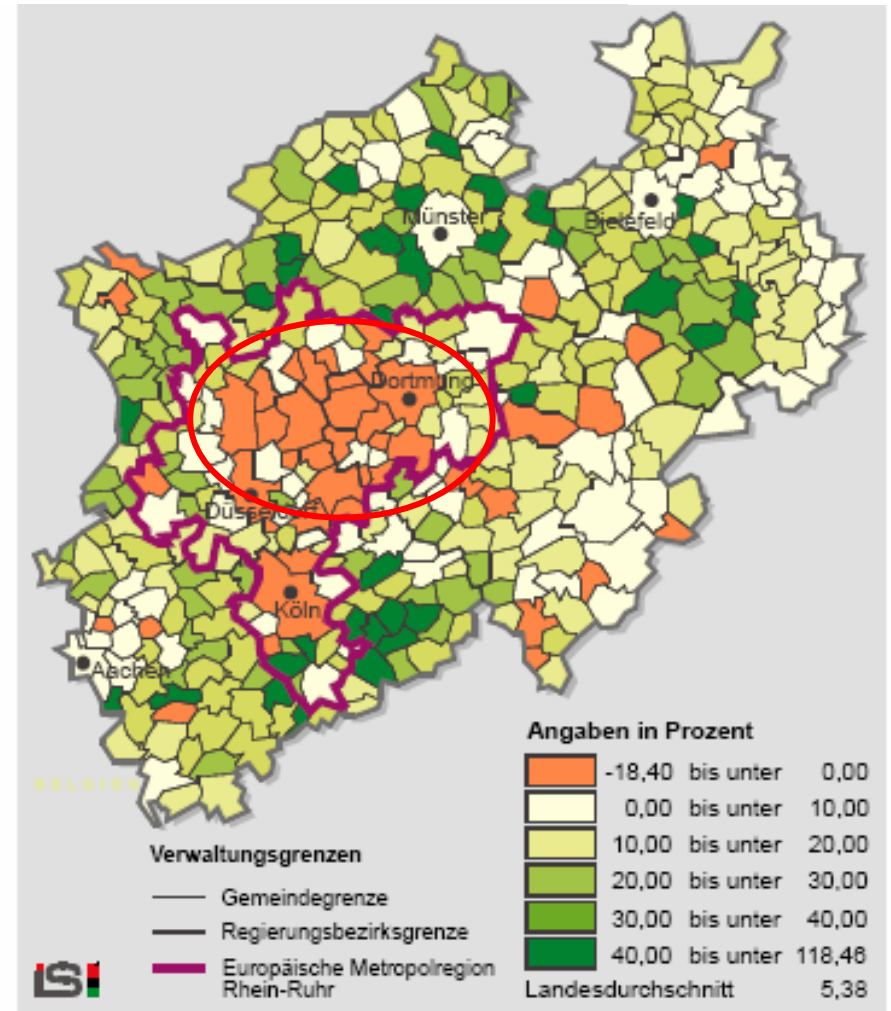
# Contents

1. Demographic Change in North Rhine-Westphalia
2. Segregation processes in North Rhine-Westphalian cities
3. Approaches
4. Conclusions

# Population Development in North Rhine-Westphalia 1975 - 2001

→ Since the 1970ies population losses in the Ruhr-Area

Demographic Change in North Rhine-Westphalia

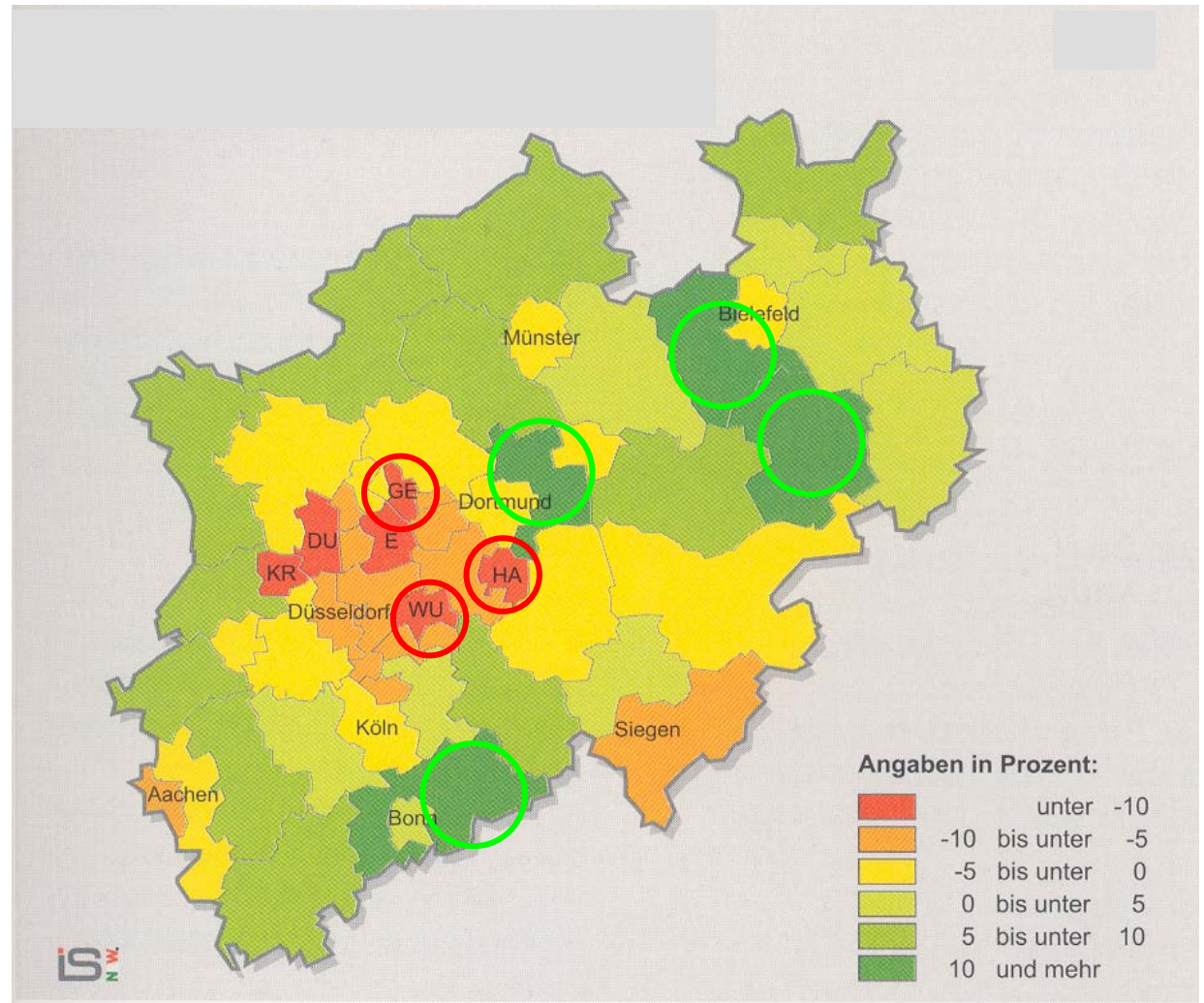


Quelle: eigene Darstellung, Daten des LDS NRW

# Population Change in North Rhine-Westphalia 2002 - 2020

Demographic Change in North Rhine-Westphalia

- 2006: 18.08 million
- 2020: 17.95 million
- 2040: 16.89 million

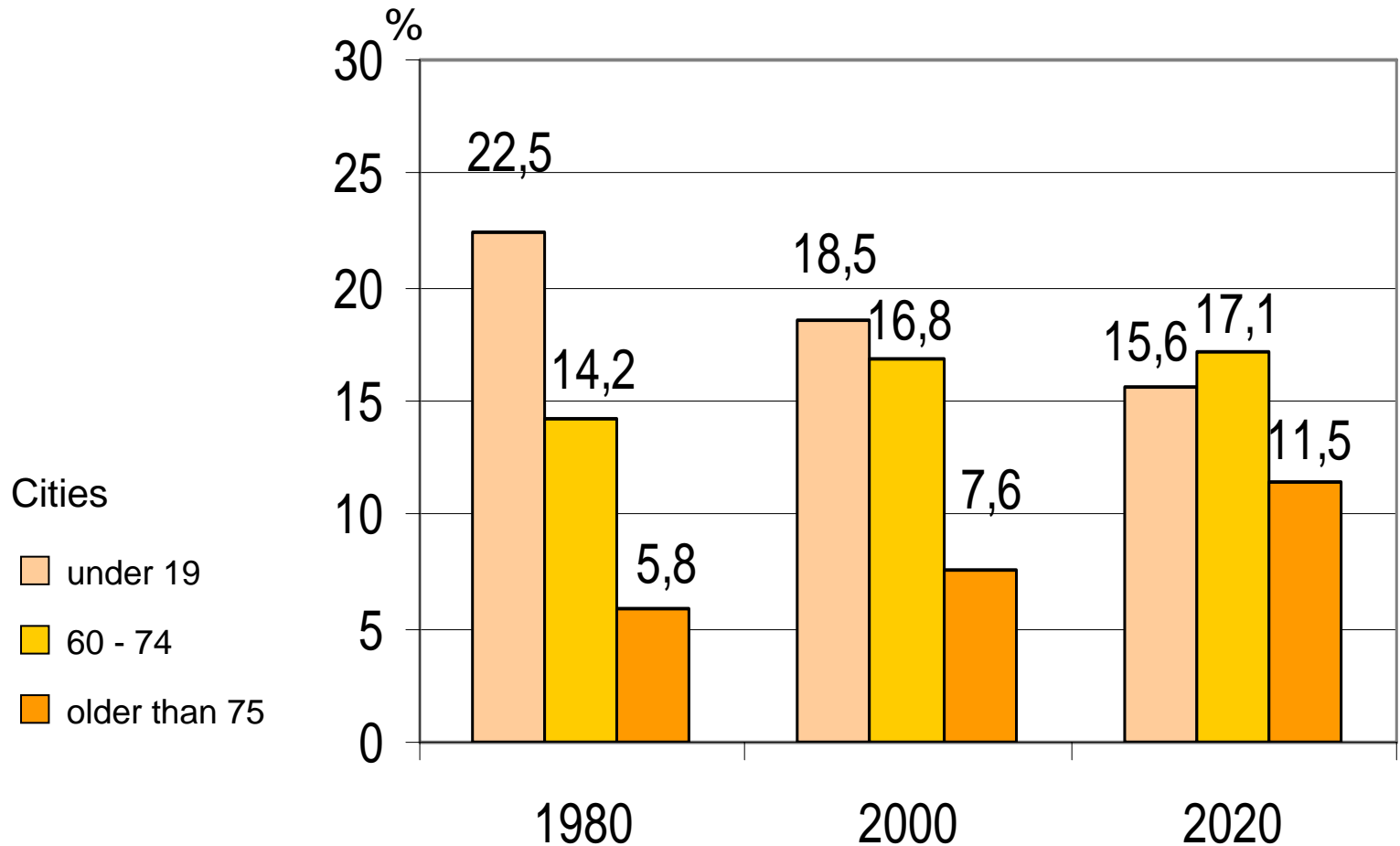


Source: ILS-trends 2/04

Demographic Change, Segregation and Social Urban Renewal  
from a North Rhine-Westfalian perspective

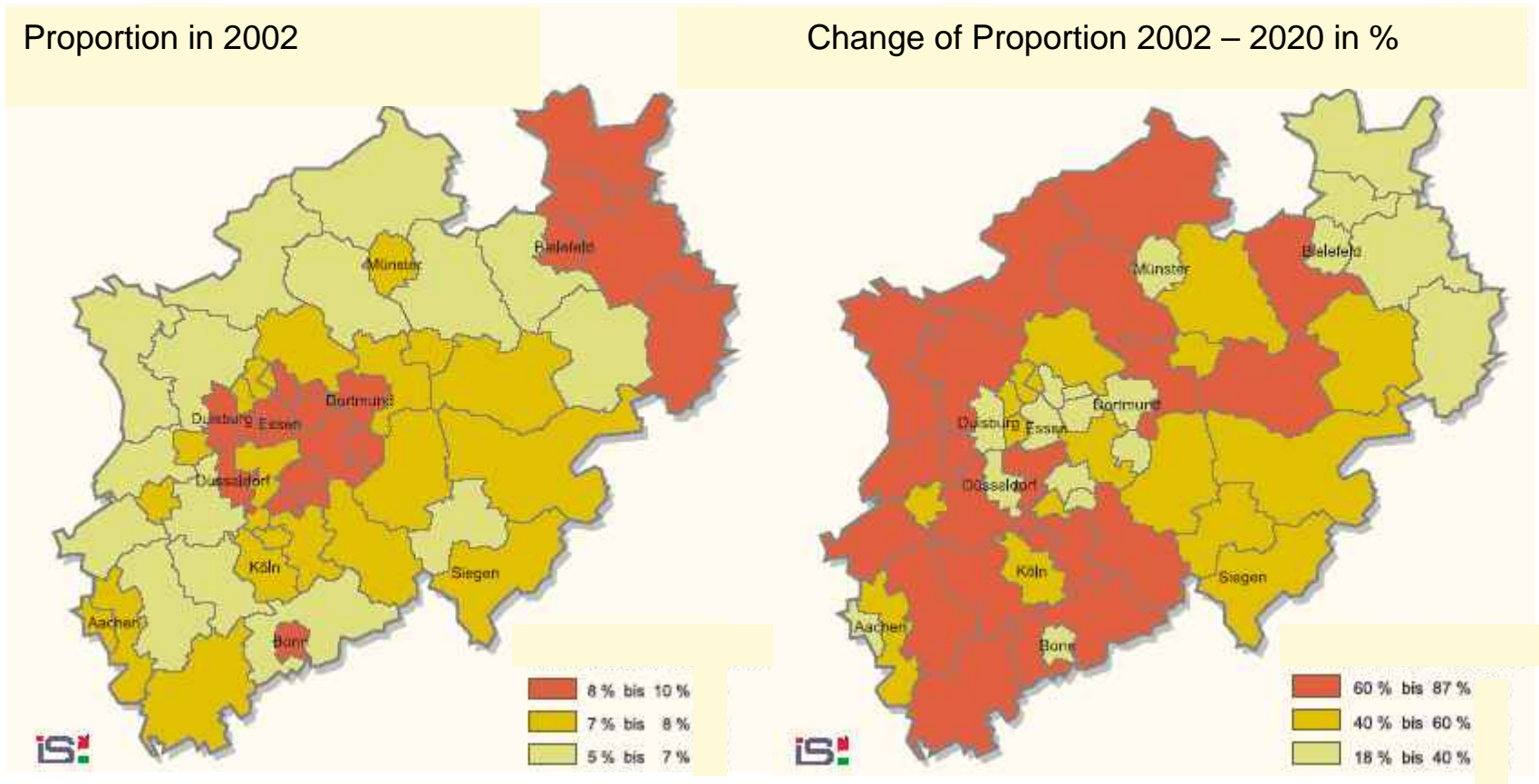
31st March 2006 – Evelyn Sucato

# Development and Prognosis of the age structure in the cities

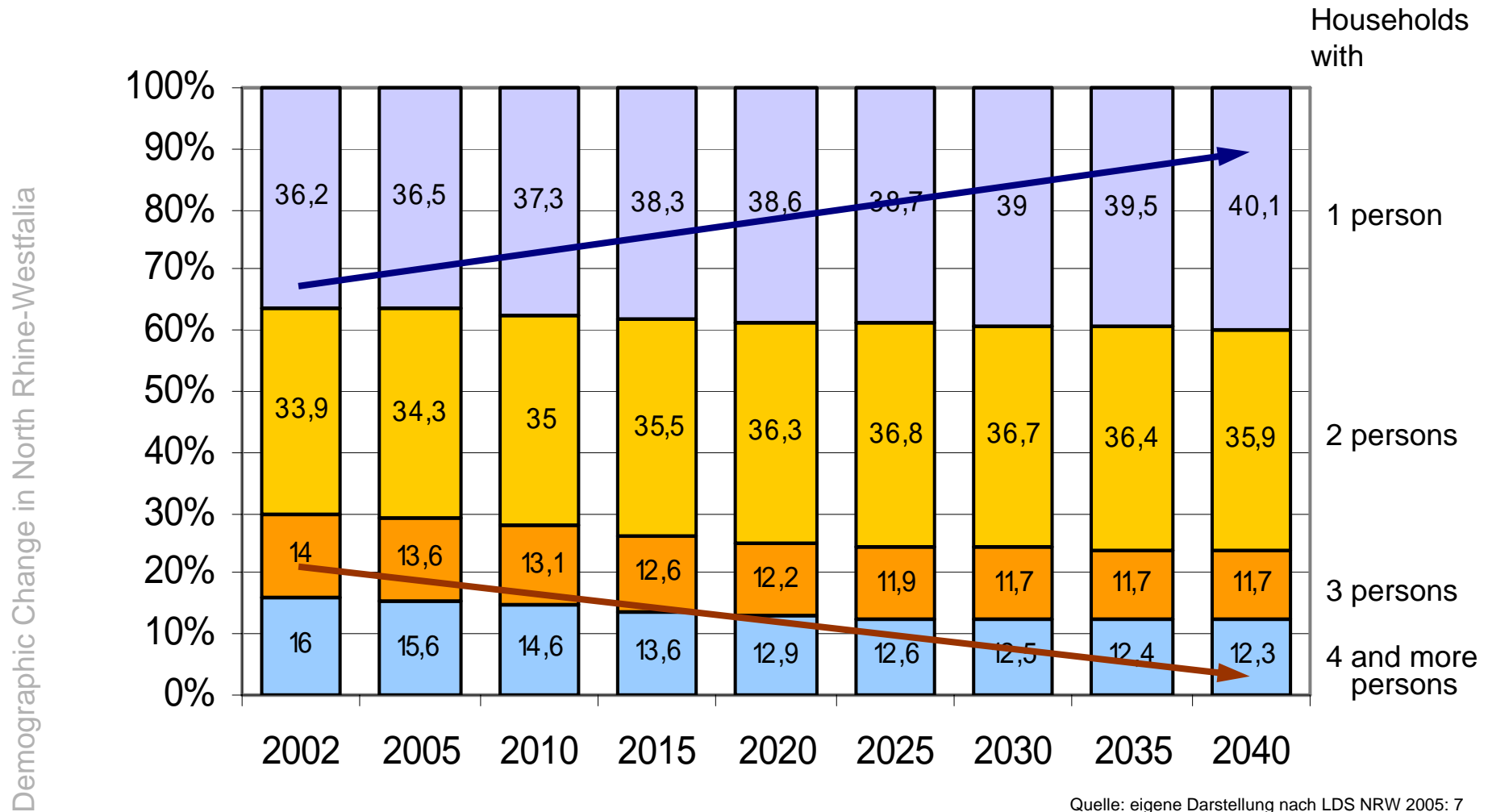


Quelle: eigene Darstellung nach Landtag NRW 2005: 48, Daten LDS NRW

# Development of the population older than 75 years

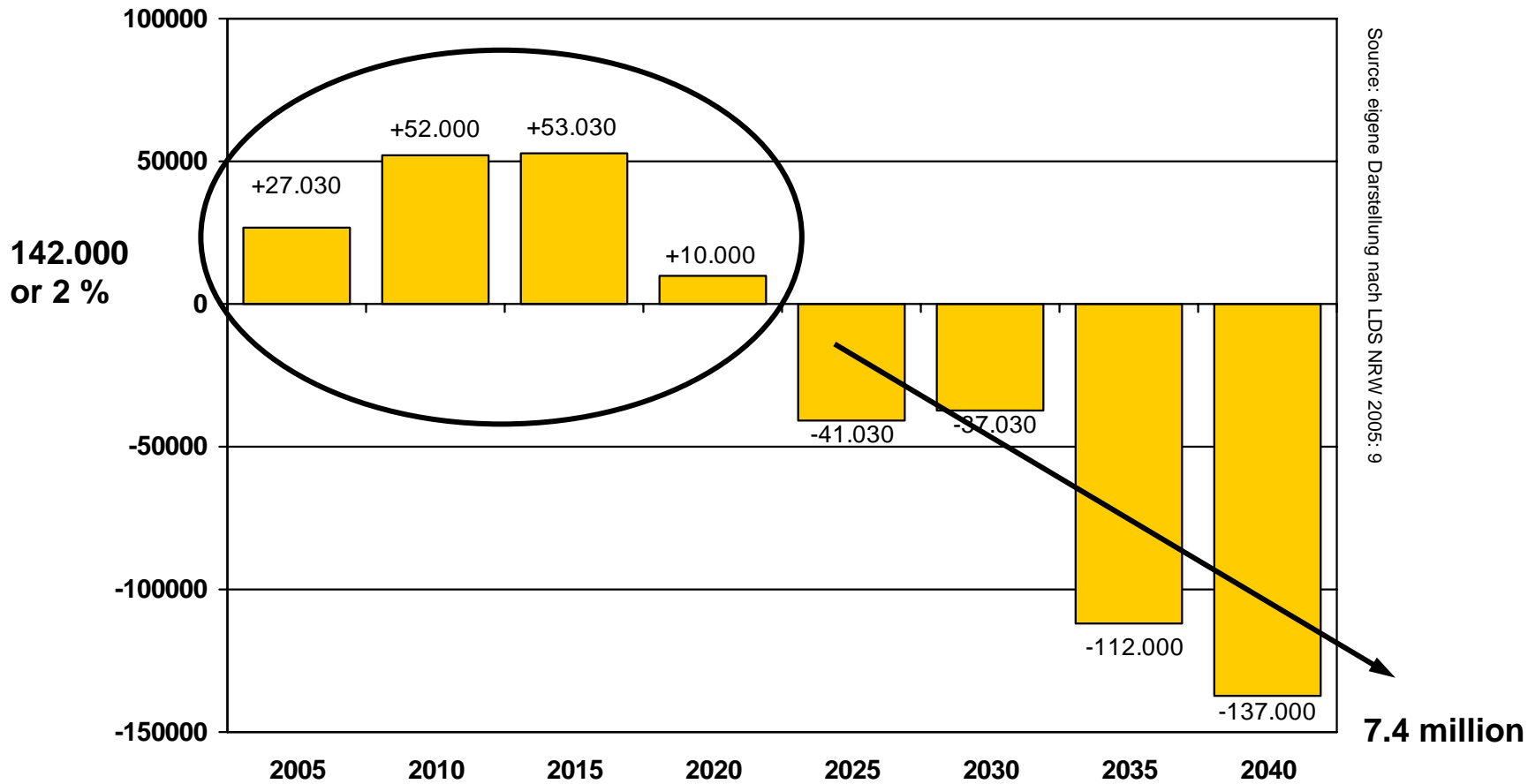


# Development of households 2002 – 2040 according to their size



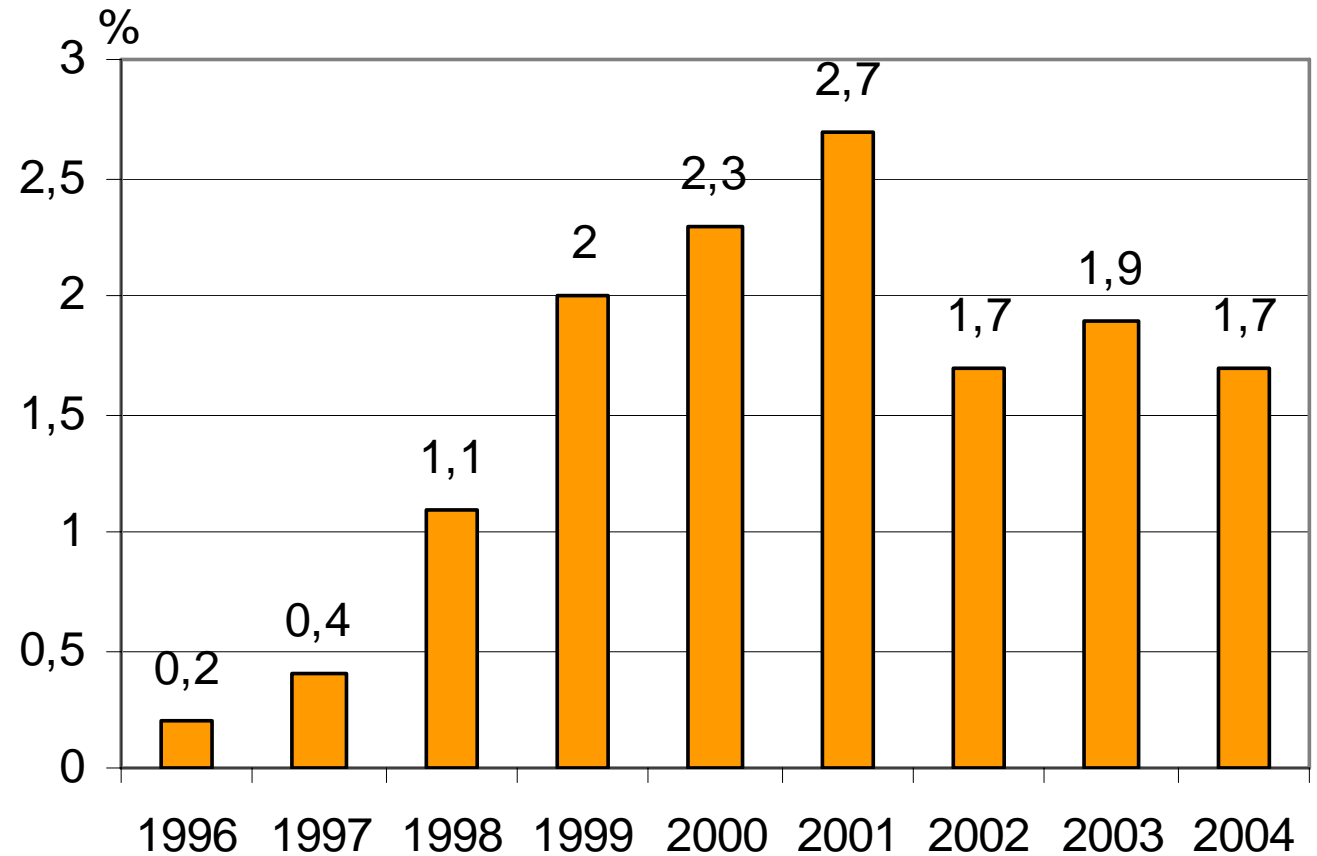
# Change of inhabited housing units compared to the preceding year

Demographic Change in North Rhine-Westfalia



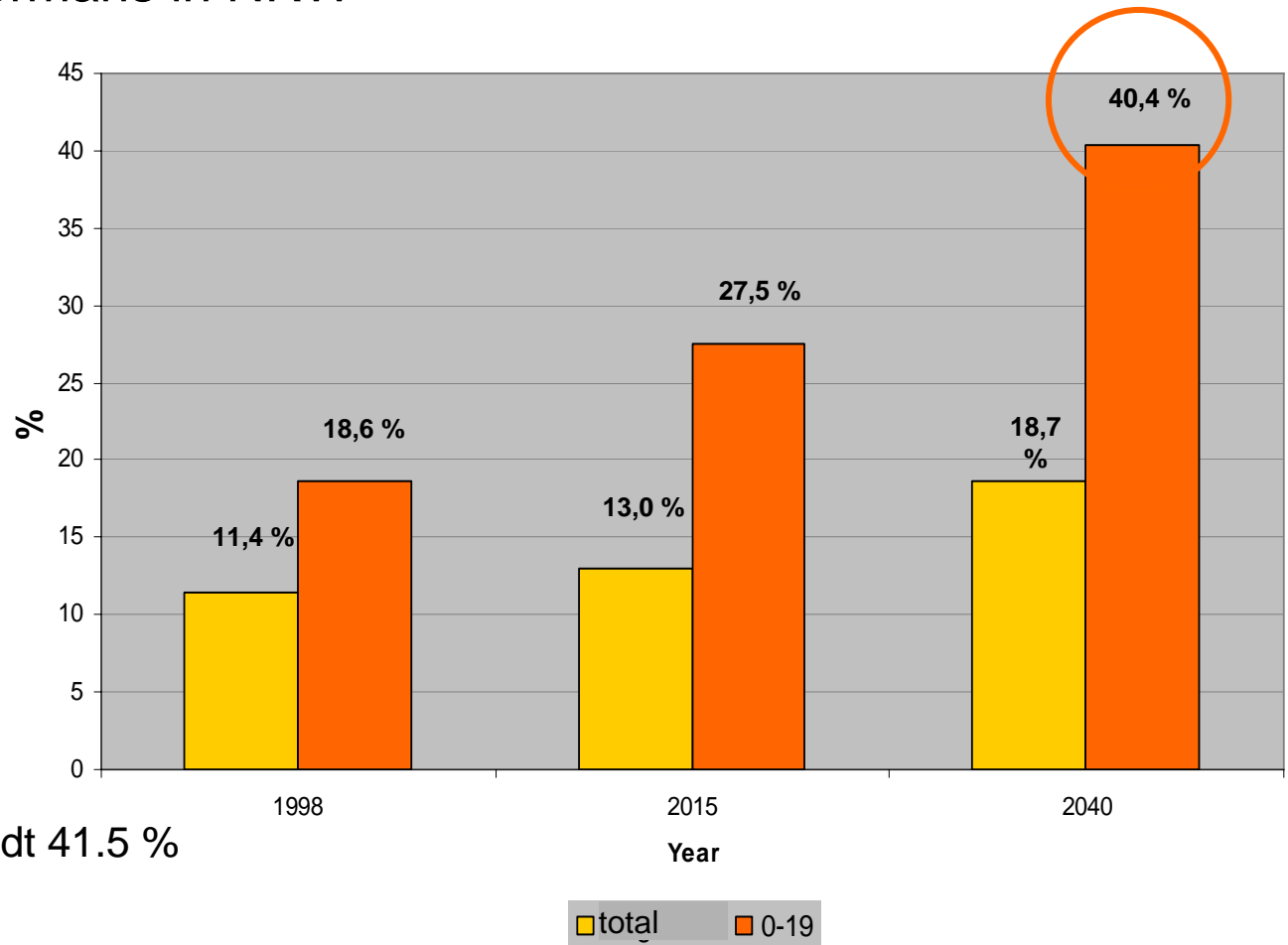
# Development of vacancies in North Rhine-Westphalian housing companies

Demographic Change in North Rhine-Westfalia



Source: eigene Darstellung nach Wfa 2005

# Proportion of non-Germans in NRW



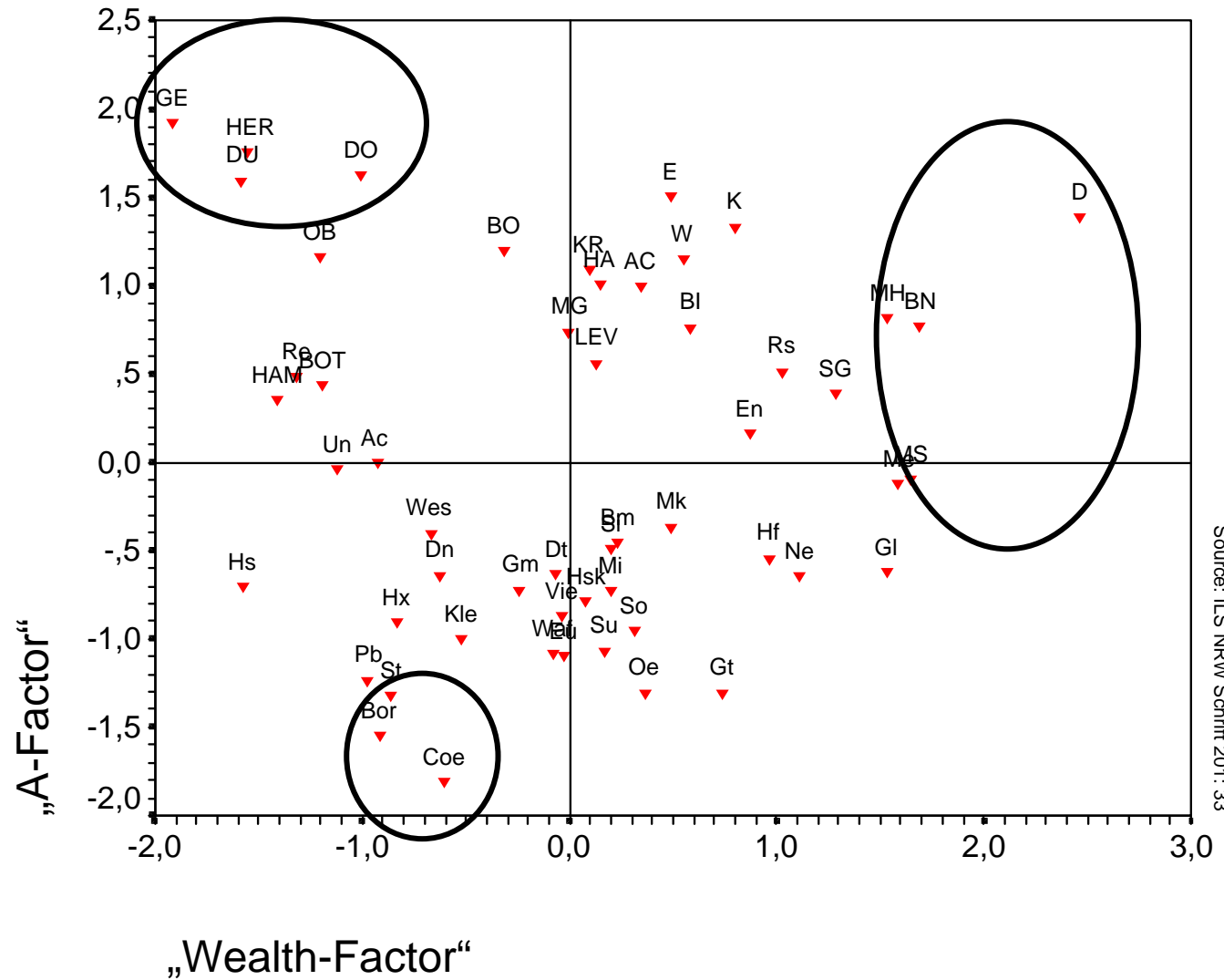
But on local level:

- Dortmund 12.7 %
- Dortmund Nordstadt 41.5 %
  
- Duisburg 14.9 %
- Duisburg Marxloh 33.8 %
  
- and more...

Source: LDS, Beiträge Band 819; Basisvariante der Prognose

# „A-Factor“ and „Wealth-Factor“ in cities and counties in NRW

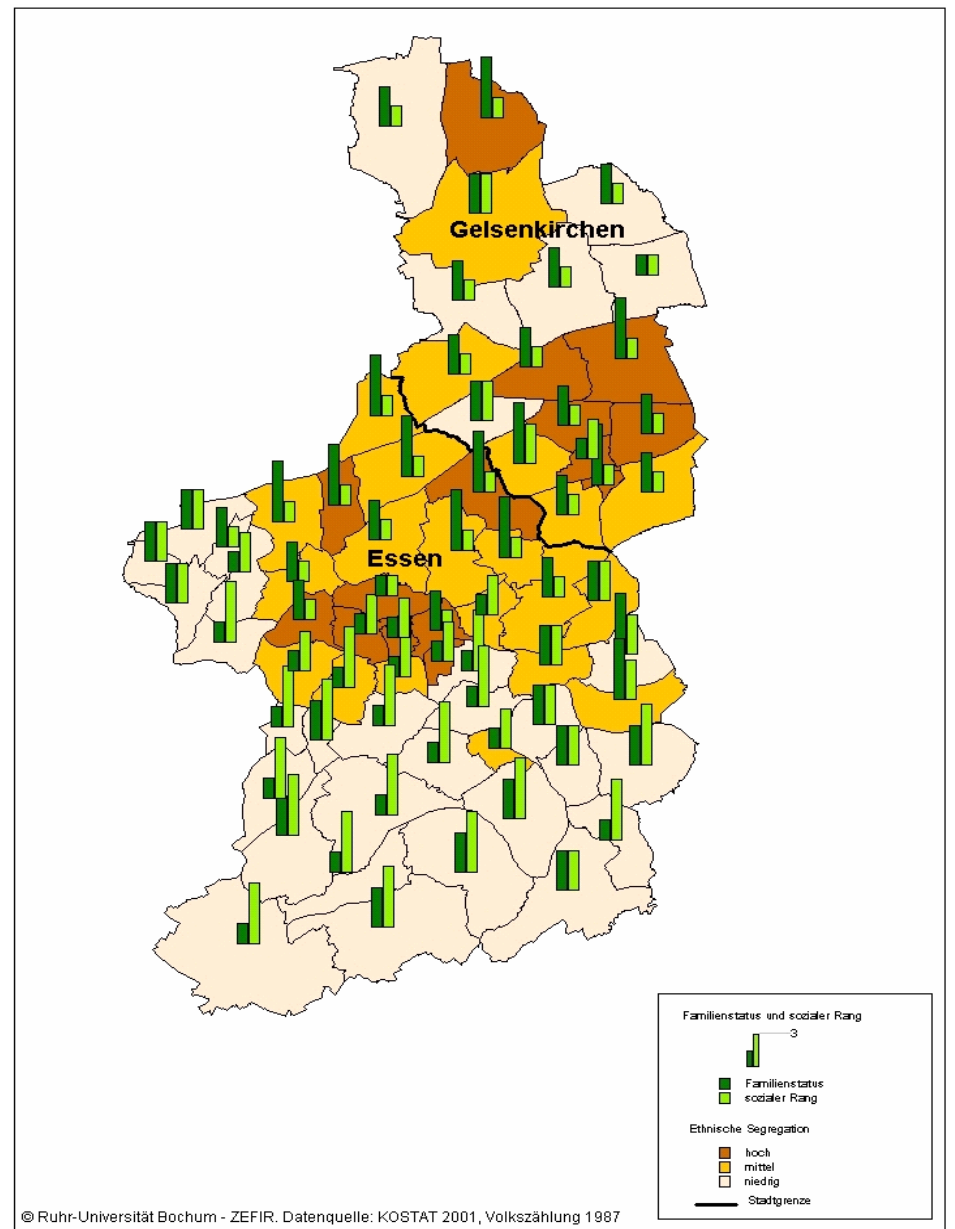
Segregation processes in North Rhine-Westfalian cities



Source: ILS NRW Schrift 201: 33

# Ethnic Segregation, „family status“ und social status in Essen and Gelsenkirchen

Segregation processes in North Rhine-Westfalian cities



Source: ILS NRW Schrift 201 : 52

Demographic Change, Segregation and Social Urban Renewal  
from a North Rhine-Westfalian perspective

31st March 2006 – Evelyn Sucato



# Approaches

## The socially integrative city

- Stabilisation of deprived urban areas and hinder further polarisation
- Catalysts: multiple deprivation, bad life circumstances, segregation
- In North Rhine Westphalia since 1993

## Stadtumbau West

- Recreation and stimulation of the functional cohesion of deprived urban areas
- Catalysts: high vacancies in the housing market and in shops, derelict sites, loss of functions in inner cities
- In West Germany since 2004

More information on:  
[www.sozialestadt.de](http://www.sozialestadt.de)  
[www.soziale-stadt.nrw.de](http://www.soziale-stadt.nrw.de)

More information on:  
[www.stadtumbauwest.de](http://www.stadtumbauwest.de)



pictures from [www.soziale-stadt.nrw.de](http://www.soziale-stadt.nrw.de)

Demographic Change, Segregation and Social Urban Renewal  
from a North Rhine-Westfalian perspective

31st March 2006 – Evelyn Sucato



# Area improvement / Infrastructure - Impressions

pictures from [www.soziale-stadt.nrw.de](http://www.soziale-stadt.nrw.de)



...after  
moder-  
nisation in  
Hamm-  
Norden

Theater in  
Gelsenkirchen  
Bismarck/  
Schalke-Nord

Renewal of  
housing stock  
and surrounding  
Dortmund Clarenberg  
Source: Cornelia Suhan

Community centre  
„Alte Heid“  
in Oberhausen  
Knappenviertel

Local Café  
in Monheim Berliner  
Viertel  
Source: Joachim Bastan

Partnership  
office in  
Bergheim  
Süd/West

# Image / Participation / Networking - Impressions

pictures from [www.soziale-stadt.nrw.de](http://www.soziale-stadt.nrw.de)



Community festival in Dortmund Nordstadt



Participation of residents in Aachen Ost



Community newspaper in Herne Horsthausen



Logo in Siegen Fischbacherberg



Interest group of resident in Düren Südost



„Market of different Cultures“ in Duisburg Marxloh

# Restructuring / Demolition / Adjustment - Impressions

---



before and after „Stadtumbau“ in Gelsenkirchen Tossehof and Oer Erkenschwick Schillerpark  
pictures from [www.schillerpark.info](http://www.schillerpark.info) and [www.stadtumbauwest.de/konzept/PW\\_Albstadt\\_Kemper.pdf](http://www.stadtumbauwest.de/konzept/PW_Albstadt_Kemper.pdf)

# Conclusions

- The current West-German perspective on demographic changes is different than the East-German as a result of a lower pressure on the housing market amongst others. But the future will bring similar effects, so we have to act preventive.
- The perception of long-term population decline and other effects of the demographic changes is sometimes still low – especially on local level. Therefore it is necessary to get more awareness from local politics on the topic.
- As demographic change is a multi-dimensional phenomenon we have to consider all aspects at the same time. Integrated area-based approaches and concepts are proven approach but we need to widen these approaches city-wide and also integrate regional aspects.

Thank you!

Contact:

ILS NRW

Evelyn Sucato

Phone: +49 231 9051 247

Fax: +49 231 9051 195

mail to: [evelyn.sucato@ils.nrw.de](mailto:evelyn.sucato@ils.nrw.de)